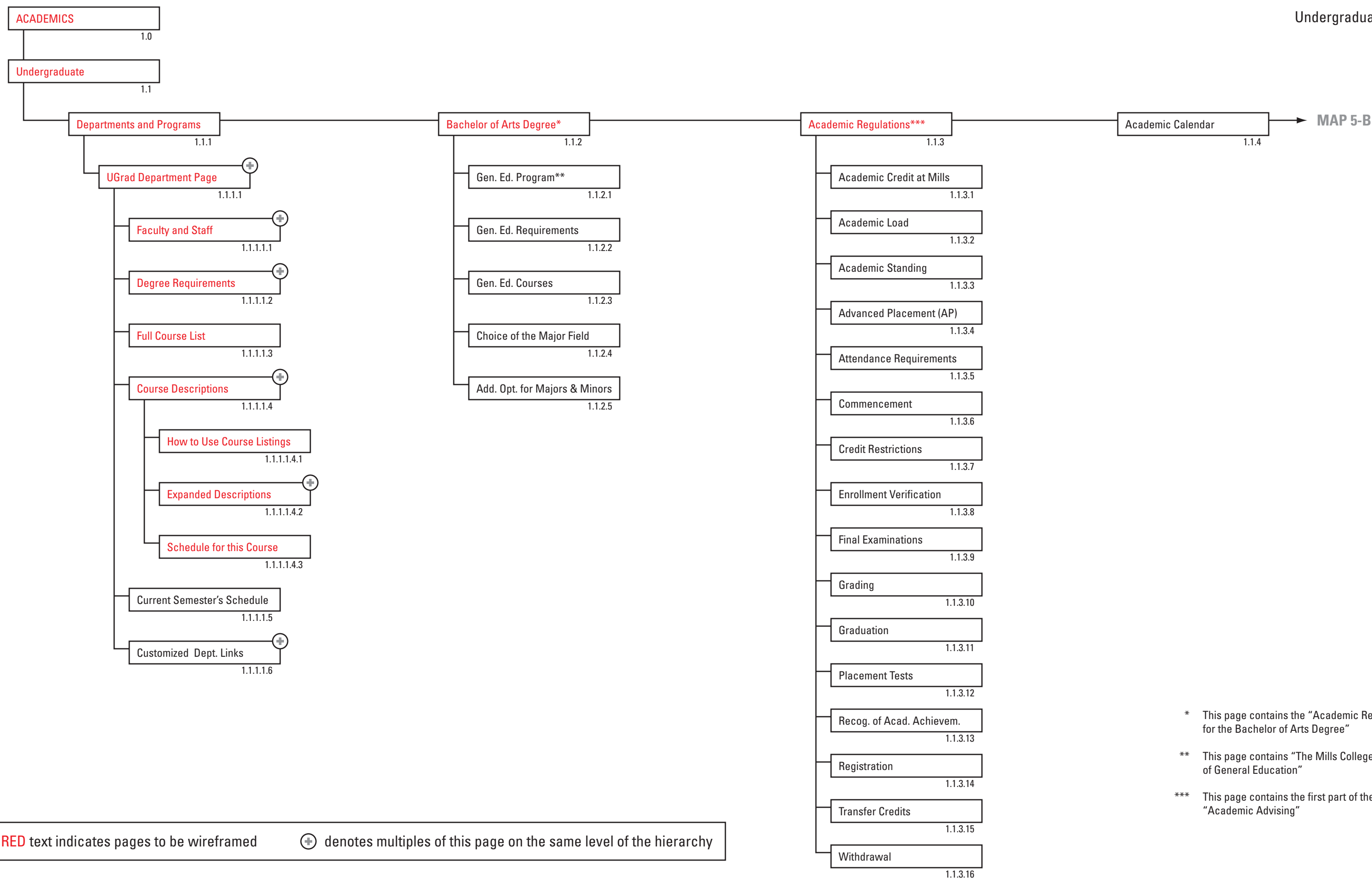


* This page contains the Phonebook Search

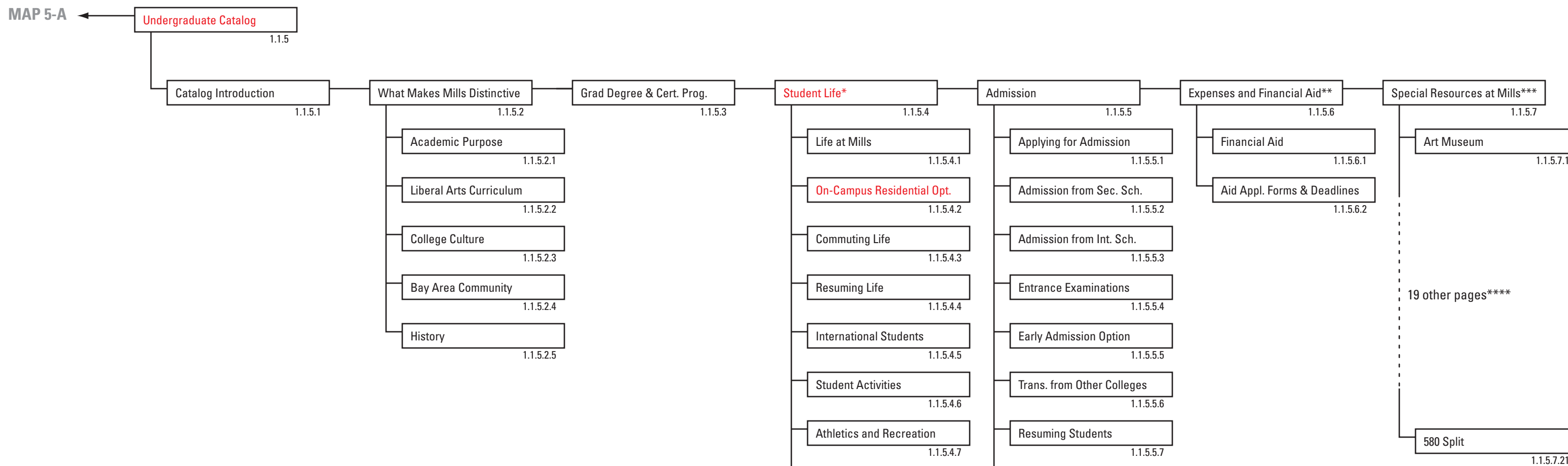
** This pages contains the Campus Map

RED text indicates pages to be wireframed ⊕ denotes multiples of this page on the same level of the hierarchy



RED text indicates pages to be wireframed ⊕ denotes multiples of this page on the same level of the hierarchy

* This page contains the “Academic Requirements for the Bachelor of Arts Degree”
 ** This page contains “The Mills College Philosophy of General Education”
 *** This page contains the first part of the regulations “Academic Advising”



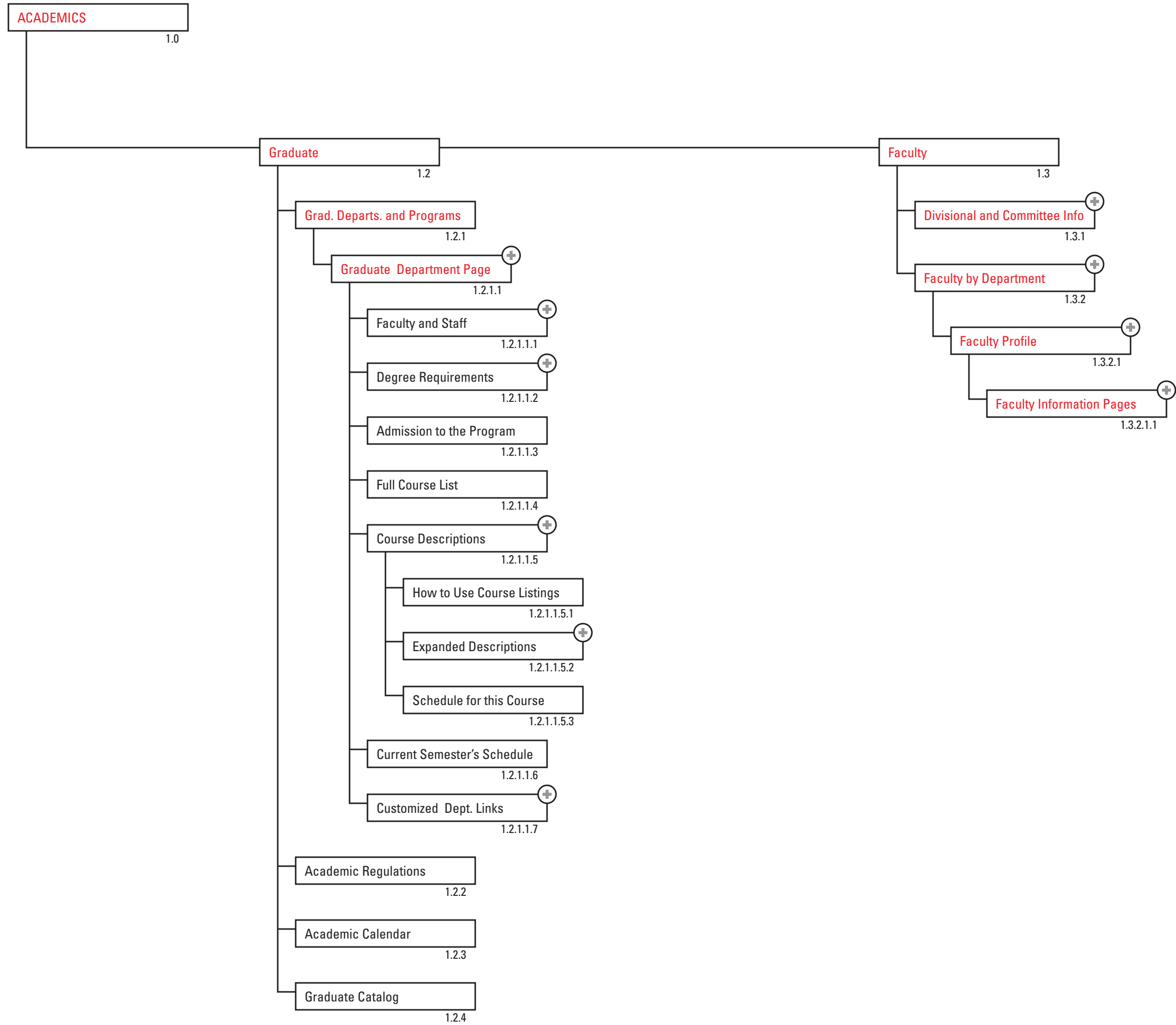
* This page contains "Membership in the Mills Academic Community"

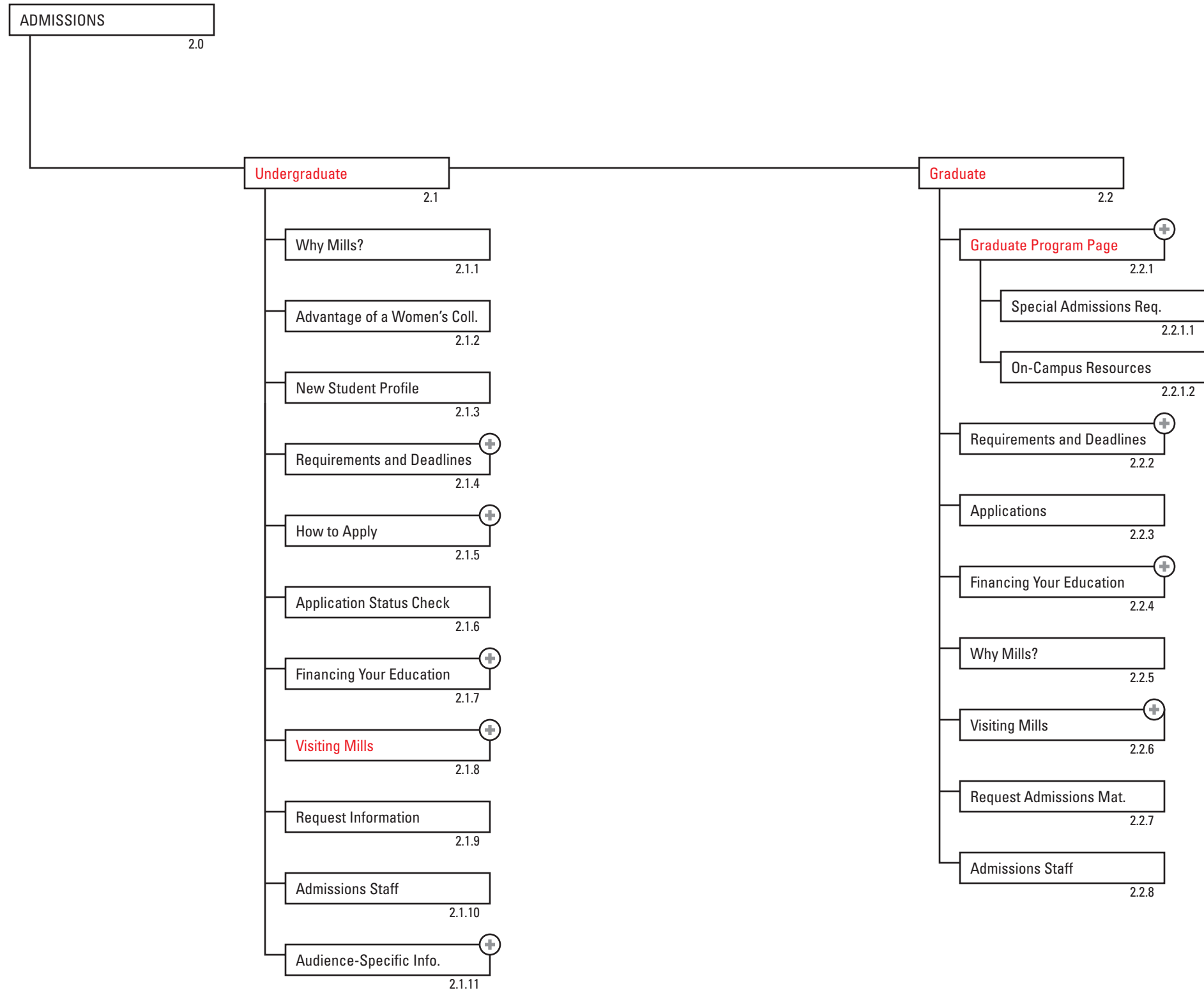
** This page contains "Undergraduate Student Fees". This section, as shown, follows the current site's division of this body of information. Given its extreme length, however, it should be revisited (and possibly radically reorganized) to yield a greater number of shorter pages.

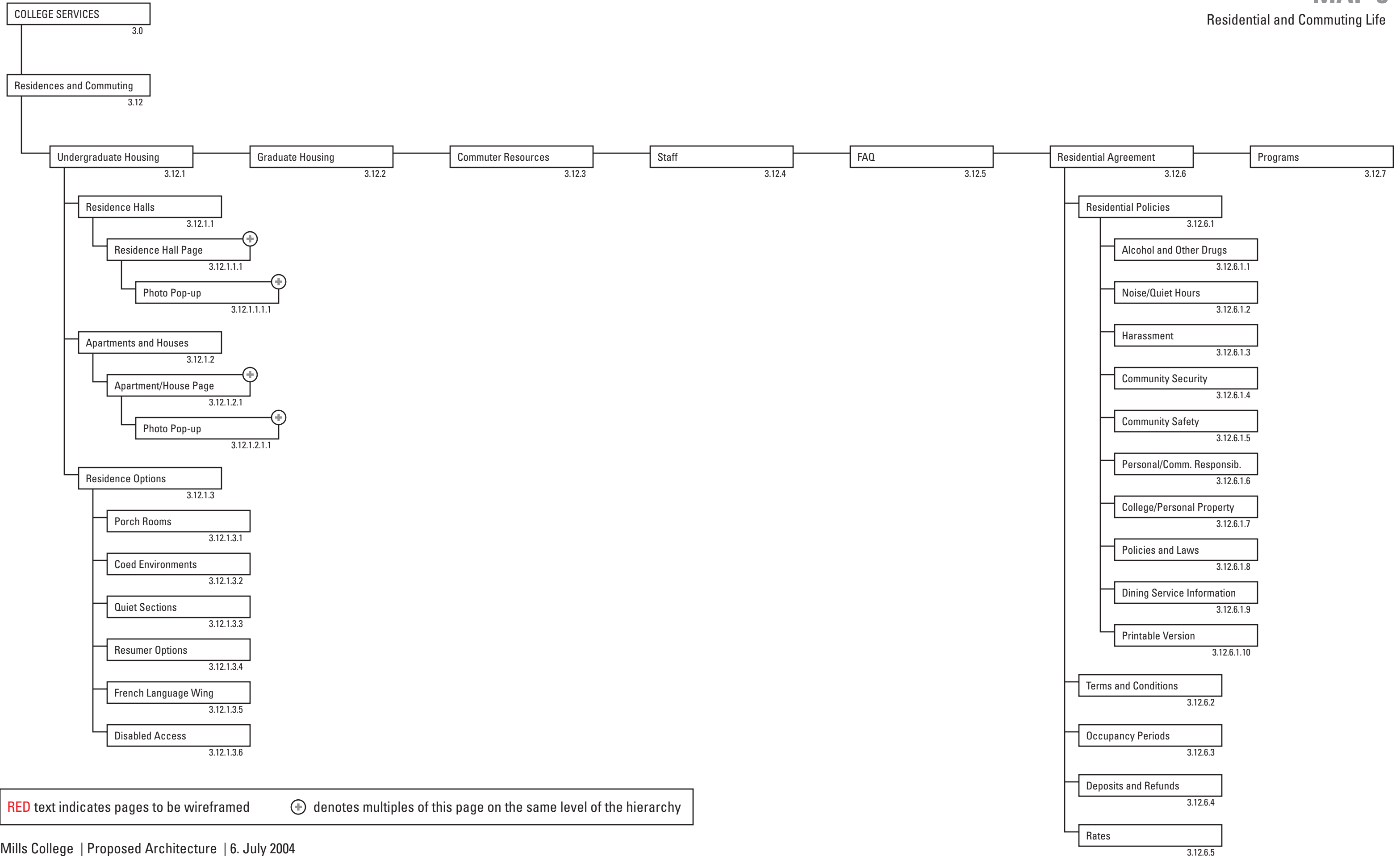
*** This page contains "Art Exhibitions, Collections, Lectures"

**** These pages are:

- | | |
|--|--|
| 1.1.5.7.2 Career Center | 1.1.5.7.11 Music Department: Center for Contemporary Music |
| 1.1.5.7.3 Children's School | 1.1.5.7.12 Office of Institutional Research and Planning |
| 1.1.5.7.4 Computing Resources | 1.1.5.7.13 The Place for Writers |
| 1.1.5.7.5 Disabled Students' Services | 1.1.5.7.14 Prieto Multimedia Lab |
| 1.1.5.7.6 Eucalyptus Press | 1.1.5.7.15 Recreation |
| 1.1.5.7.7 F.W. Olin Library | 1.1.5.7.16 Student Diversity Programs |
| 1.1.5.7.8 Health Services | 1.1.5.7.17 Students of Color |
| 1.1.5.7.9 International Student Services | 1.1.5.7.18 Video Production Facilities |
| 1.1.5.7.10 Mills Community link | 1.1.5.7.19 Women's Leadership Institute |
| | 1.1.5.7.20 The Writing Center |







RED text indicates pages to be wireframed ⊕ denotes multiples of this page on the same level of the hierarchy